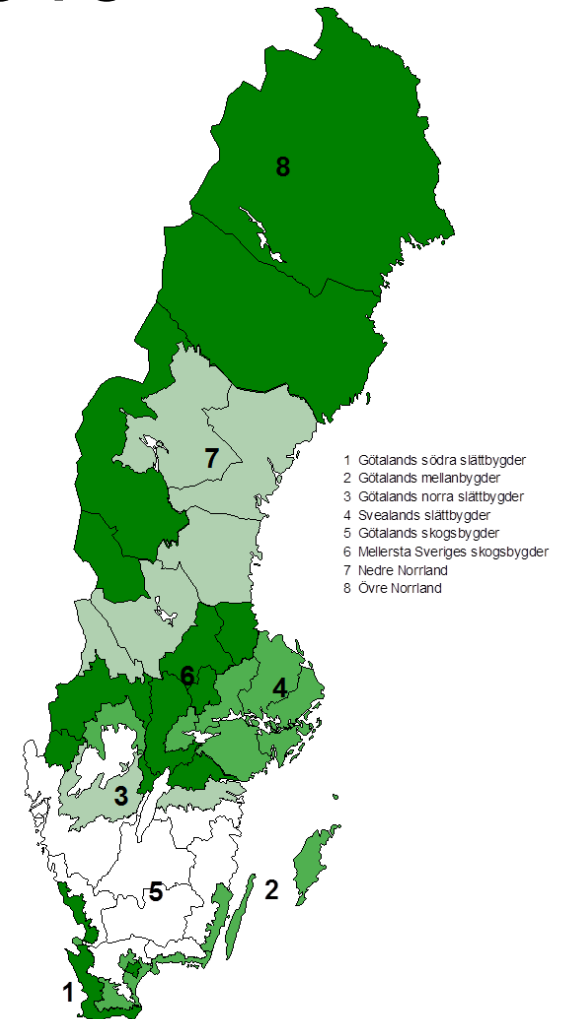
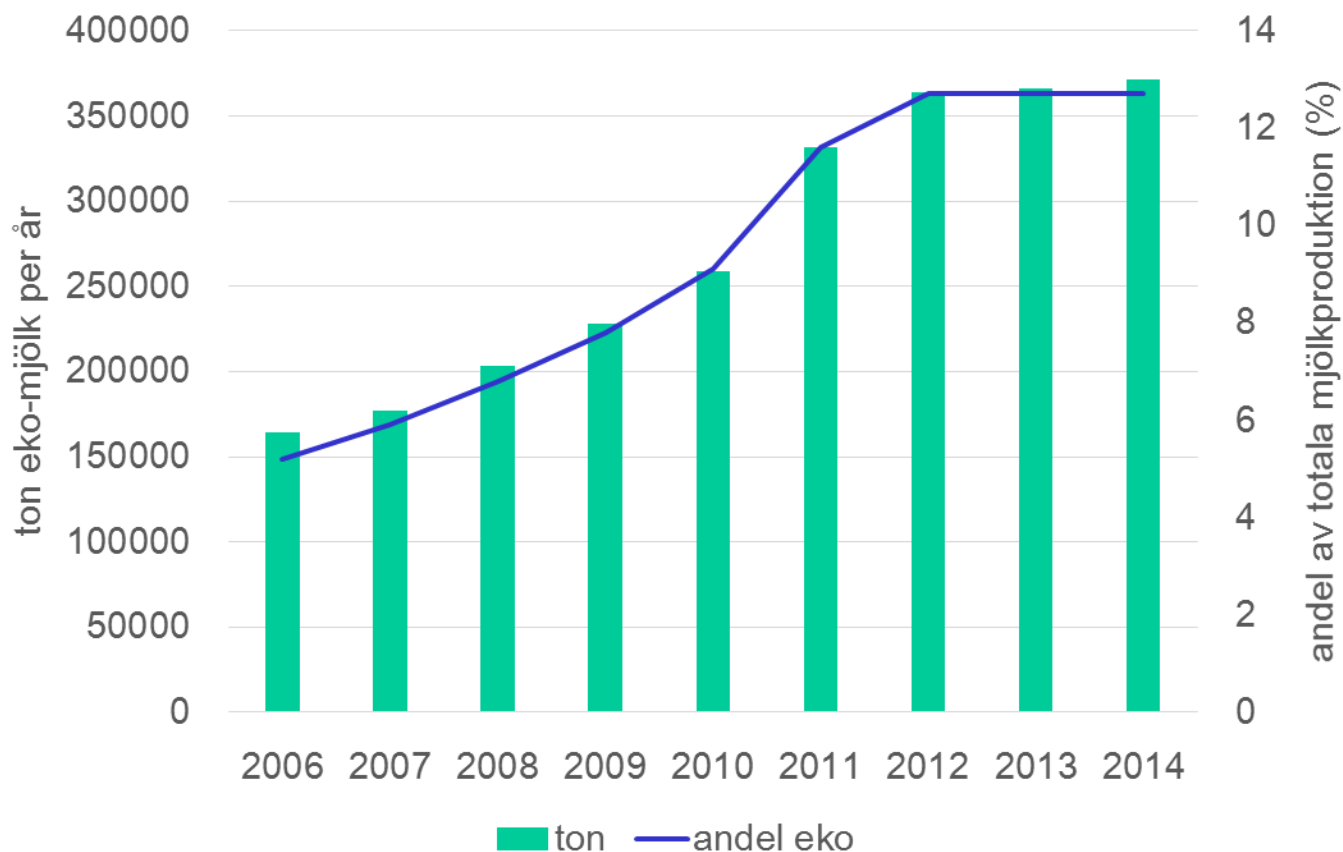


# Organic milk production in Sweden - 2015



Niels Andresen, Jordbruksverket  
[niels.andresen@jordbruksverket.se](mailto:niels.andresen@jordbruksverket.se)

# Development of organic milk production in Sweden



# Organic milk production in relation to total milk production 2015

	Conv. + organic	Organic	% organic
Number of cows	338000	46900	14 %
Total milk produced (ton)	2921000	367000	12,5 %
Milk delivery per cow (kg)	8600	7800	91 %
Average herd size (cows)	81	89	+ 10 %

# Land to organic dairy farms (2014)

- Average land area of 168 ha arable land and 29 ha of permanent grassland (total area of 198 ha).
  - Approximately 1,9 ha arable land per cow in average (obs including replacement and bulls/steers)
- 86 % of the organic dairy cows were on farms with more than 100 ha arable land.



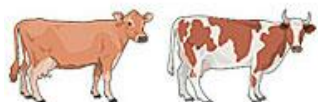
# Distribution of breeds in the whole dairy cow population (2015)

## VÅRA VANLIGASTE KORASER



Svensk kullig  
boskap (SKB)  
0,6 %

Svensk låglands-  
boskap (SLB)  
46,1 %



Svensk Jersey  
boskap (SJB)  
0,5 %

Svensk röd och  
vit boskap (SRB)  
47,9 %

Swedish Holstein:	54 %
Swedish red and white	38 %
Jersey	0,7 %
Landrace	0,3%
Crossbreeds	7%

# Key numbers according to milk recording, 2015

Approximately 80 % of the organic cows in milk recording

	Conventional	Organic
Number of cows	218 346	37 798
Herd size (cows)	82	93
Milk, kg	9 716	8 916
Fat, %	4,2	4,1
Protein, %	3,5	3,4
ECM, kg	10 036	9 044

Source: Växa

# Key numbers according to milk recording, 2015

	Conventional	Organic
Cell count (1000)	247	269
Proportion of death born calfs, %	5,5	5,4
% out sorted cows (all)	38,2	35,7
% out sorted (1 calfers)	26,3	24
Age of cows leaving, month	60,2	60,9

Source: Växa

# Grazing periods

- 4 months in the south of Sweden  
(average 1000 kg DM, variation 720 – 1500 kg DM)
- 3 months in the “middle” of Sweden  
(average 700 kg DM, variation 540 – 1500 kg DM)
- 2 months in the north of Sweden  
(average 400 kg DM, variation 360 - 700 kg DM)

Cows should have access to outdoor areas in 2 months more than the grazing period





# Composition of clover/grass mixture (cutting)

Large regional variation, but a frame will be:

- Red clover: 10 – 15 %
- White clover: 5 – 10 %
- Timothy: 30 – 65 %
- Meadow fescue/Tall fescue(hybrid) 15 – 40 %
- Perennial rye grass 0 – 25 %  
(left out more and more)
  
- Lusern is introduced in some mixtures.

# Feeding – overall estimates

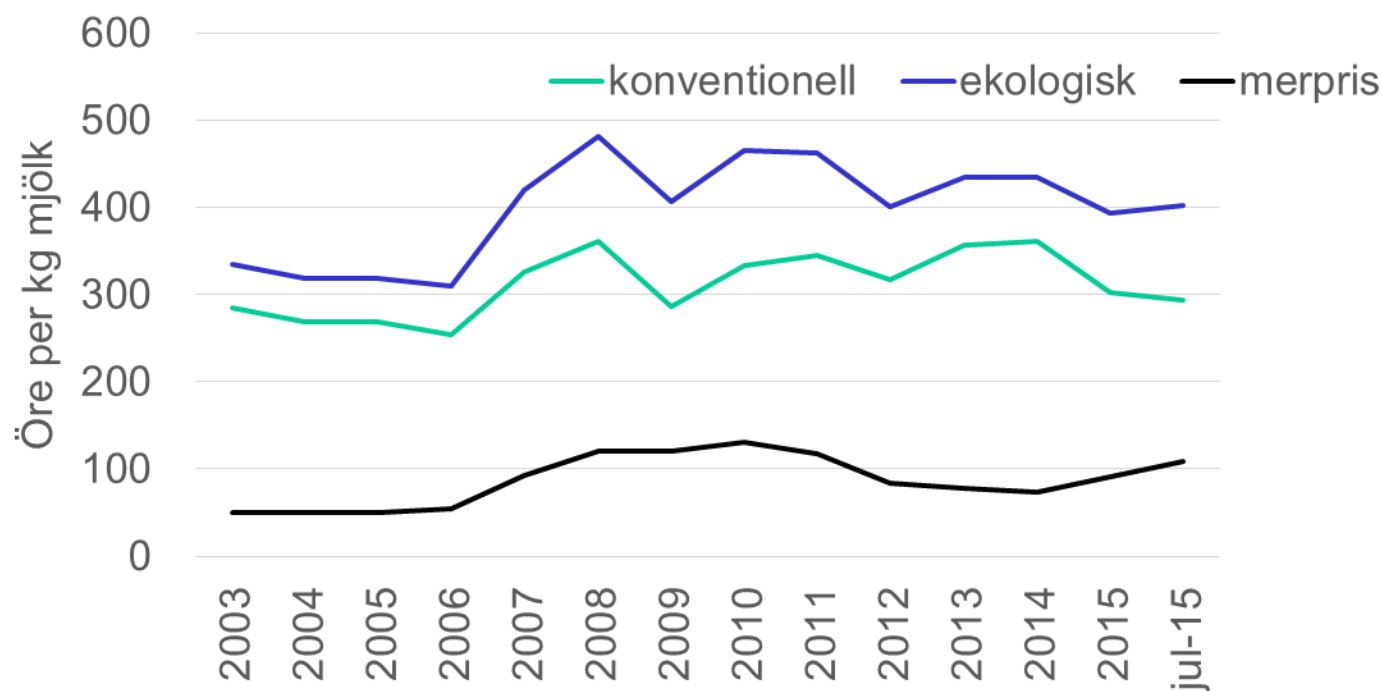
- **Average roughage percentage:**
  - Qualified estimate is 65 %
- **Typical roughages:**
  - 85-90 % of the roughage will be clover/grass in Sweden.
  - Whole crop silage will be around 10-15 % for the milking cows
- **Concentrate:**
  - Cereal part: Barley, oats, wheat, triticale
  - Protein part: Soya, rape seed products, field beans

# What are the future challenges?

- To keep high demand in the market of organic dairy products
- Low conventional milk price is also a problem for organic producers in the long run
- On farm challenges
  - Grazing in large herds (farm layout for grazing)
  - Local production of protein feeds/concentrate
  - Regionally - enough land can be a problem
  - Education and interests from young farmers for milk production

# Milk price during 12 years

Avräkningspris 2003-2015 på mjölk



Källa: jordbruksverkets  
statistik databas

# Organic premium price as a percentage of the conventional milk price

